

TAHO OCEANIA 23,547 DWT Cement Carrier 88

☐ Contents ☐ By Builder ☒ By Ship Type



TAHO OCEANIA 23,547 DWT Cement Carrier 88

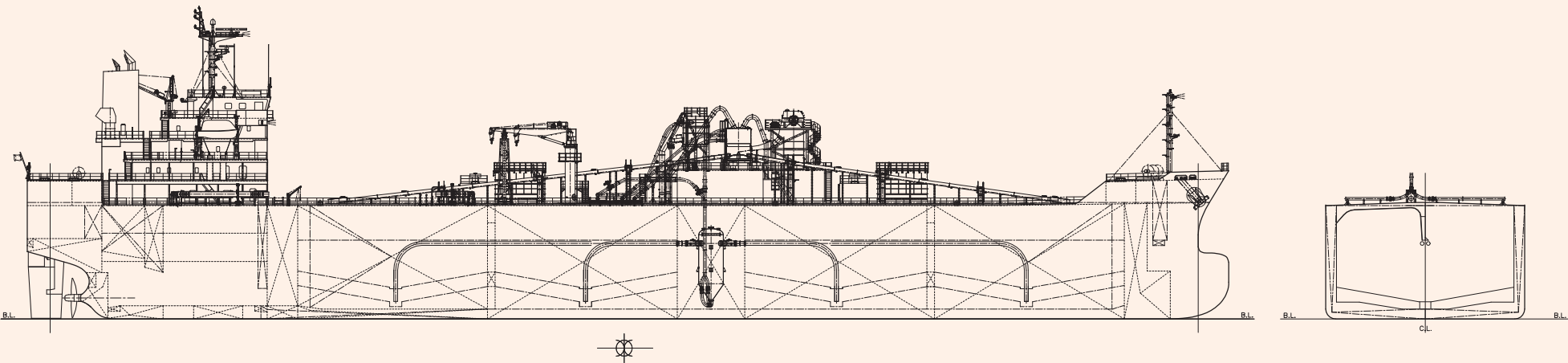
The 23,547-dwt Cement Carrier TAHO OCEANIA was built at Shin Kurushima Dockyard Co., Ltd., and delivered to a Taiwanese Owner in September 2019.

Features

- 1. The cement loading/unloading system has a capacity of 1,000 t/h mechanical loading and 500 t/h pneumatic unloading (2-lines).
- 2. The system consists of hold bottom air sliders, bucket elevators, etc.
- 3. Her hold is designed and built with special care for cargo residue.

PRINCIPAL PARTICULARS

Length (o.a.)	157.00 m	Main engine	MAKITA-MITSUI-MAN B&W 6S40ME-B9.5
Length (b.p.)	150.00 m	MCR (kWxrpm)	4,650 kW x 123 min ⁻¹
Breadth (mld.)	26.00 m	NOR (kWxrpm)	3,953 kW x about 117 min ⁻¹
Depth (mld.)	14.80 m	Speed (service)	13.6 knots
Draft (mld.)	9.50m	Complement	25 P
Gross tonnage	16,572	Classification	NK/CR
Deadweight	23,547 t	Loading capacity (grain)	23,547 m ³
		Builder	Shin Kurushima Dockyard Co., Ltd.



YOSHU NO.1 11,000 DWT Cement Carrier 89

☐ Contents ☐ By Builder ☒ By Ship Type



YOSHU NO.1 11,000 DWT Cement Carrier 89

The 11,000-dwt type cement carrier YOSHU NO.1 was built at SHIN KURUSHIMA DOCKYARD CO., LTD. and delivered to the Japanese Owner in March 2021.

Features

- 1. The cement loading/unloading system has a capacity of 1,200 t/h mechanical loading and 500 t/h pneumatic unloading (3-lines).
- 2. The system consists of hold bottom aerations, air sliders on upper deck, vertical screw conveyors, cement blow tanks, etc
- 3. Her hold is designed and built with special care for cargo residue.

PRINCIPAL PARTICULARS

Length (o.a.)	134.98 m	Main engine	MAKITA-MITSUI-MAN B&W 7S35ME-B9.5
Length (b.p.)	128.00 m	MCR (kW×rpm)	5,100 kW x 157 min ⁻¹
Breadth (mld.)	20.00 m	NOR (kW×rpm)	4,080 kW x abt. 146 min ⁻¹
Depth (mld.)	10.30 m	Speed (service)	14.2 knots
Draft (mld.)	7.60 m	Complement	15 P
Gross tonnage	7,985	Classification	NK
Deadweight	11,337 t	Loading capacity (grain)	9,404.82 m ³
		Builder	Shin Kurushima Dockyard Co., Ltd.

